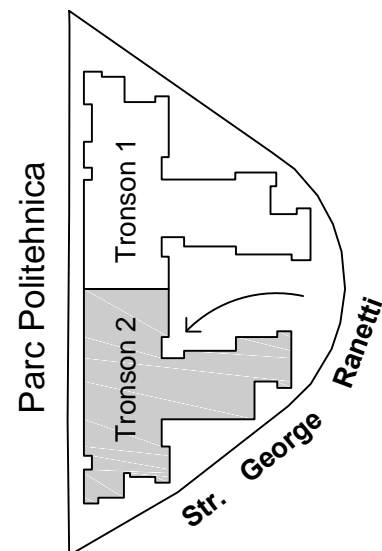
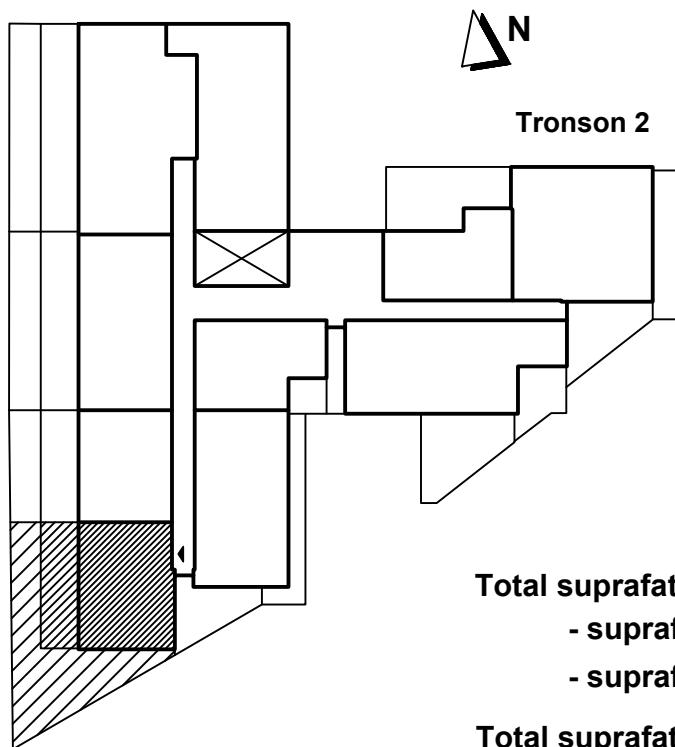


Apartment 2 camere - 2003, parter, tronson 2 Str. George Ranetti, Nr. 2-8, Sector 6



Total suprafata construita apartament = 161.30 mp, din care:
 - suprafata construita terasa = 23.70 mp
 - suprafata construita gradina = 77.60 mp

Total suprafata utila apartament = 140.90 mp

